

**bois**deck

# An Ideal Replacement for Wood

High Performance Premium WPC  
Lightweight Foamed Vinyl Composite





**It's pronounced 'BWA' - DECK.  
It's french for wood.**

Boisdeck is the premium brand for Wood Plastic Composite (WPC) and Vinyl Composite (PVC) products, curated by our team at Timberdeck Sdn. Bhd, a leading regional manufacturer and leader in the research and development of green and sustainable building materials.

Our wood replacement products, are possibly the only one of its kind in the world which has Closest-To-Real-Wood 'Appearance' and 'Feel'.

Timberdeck is a subsidiary company of SYG Group, an industry leader with more than 50 years of R&D experience in polymer extrusion technology.

Since its inception in 2011, Timberdeck has been at the forefront of the green building industry, pioneering the field of composite extrusion.

### **Our Vision**

Together we green the planet for better living and a healthful environment, through awareness and innovative solutions.

### **Our Mission**

We are committed to preserving the forest for the next generation and promoting environmental stewardship that cares about our planet. We promote sustainable use of the earth's resources to reduce pollution and waste.

### **Our Reach**

Our products are widely exported and used across Europe, the Middle East and Asia.





## We Believe Sustainability Matters

Boisdeck is passionate about innovations that are centred around the 4R's conservation principles.

Our purpose, without incentives from local authorities, is to create financially self-sustaining products. We believe it is possible to save costs and the environment.

### **Reduce**

Reducing forest exploitation with the use of wood replacement, which in turn helps reduce our carbon footprint.

### **Reclaim**

Our products are made from "reclaimed" post-graded materials for low embodied carbon. These repurposed materials are resilient, perform better than wood-fibre based products, and have long life span.

### **Refurbish**

The surface of our products can be restored and renewed with mere sanding, without the use of paint or wood coating.

### **Recyclable**

Our products are completely recyclable. The value of recycled materials is able to sustain the recycling process cost.

## A Perfect Blend of WPC Technology and Art

### State-of-the-Art Manufacturing Technology

WPC Co-extrusion technology is the industry's newest and most advanced innovation in extrusion moulding technology. The coated surface and core are extruded simultaneously, evenly and firmly, thus requiring zero painting or coatings that can peel off or need to be reapplied.

Our proprietary formula produces the most realistic wood look with a natural blend of colours and subtle textures, unlike anything you will find on the market.

Boisdeck's engineered co-extruded composite products are tested in the harshest climates and built to last. These high-performance composites come with a wide array of advantages and are perfectly suitable for outdoor landscape use.

### The Art of Biophilia in Architecture Design

Biophilic designs seek to connect our innate and inherent need to affiliate with nature in our modern built environments.

It incorporates natural landscape and elements like daylights, ventilation, green plants, water and specifically wood features where you can see and feel.

This nature-based and wellness-focused architectural design approach helps create a healthier and more cohesive environment for this generation of eco-conscious individuals.

#### TAKE NOTE

- Boisdeck products (WPC & PVC) are subject to natural variations in colour and pattern as part of the manufacturing process in different production runs or batches. Each batch of raw material delivered to us may vary from batch to batch, as they are acquired from natural elements and sources.

If you are looking for a uniform look, we encourage you to purchase a sufficient quantity of the same production batch to help minimise colour-matching issues. Similar to any other natural product, one expects to find shade variation. This, in turn, better emulates what you find in real wood!

- All images in this brochure are for illustration purposes only. There may be a disparity between the colours of the products and images seen in this brochure due to printing and lighting factors.



BUATAN MALAYSIA  
MADE IN MALAYSIA

Made To Last

# High Performance Premium WPC

WPC Decking

WPC Wall Cladding

WPC Louvre

Suited for Outdoor Architecture



# What You Will See

## Encapsulated Protective Layer

360° degrees protection (including grooves)

- Homogeneous material (uniform composition), with natural and random wood grain patterns
- Closest-to-real-wood 'appearance' & 'feel'
- Stable in color
- High slip resistance
- Water / moisture resistant
- Chlorine & salt water resistant
- Anti-fungus
- UV resistant
- Stain-resistant to food & beverage items
- Resistant to household floor cleaning agent



## Maintenance Guide:

- 15-year manufacturer's limited warranty.
- Can be cleaned with regular cleaning liquids.
- Refurbish with sandpaper to remove tough stains, scratches & pollutants.
- No painting or coating is required.



## Vinyl-based WPC

- High flame retardancy
- High impact strength
- Nondegradable
- Termite resistant
- Eco-friendly & recyclable
- High dense core allows for less expansion & contraction

## Why Rice Husks?

Readily available in Malaysia, Rice Husk is a sustainable option compared to other wood-alternatives as it is classified as agricultural bio-waste.

It is a low embodied carbon, safe, and cost-efficient bio-based building material. The use of Rice Husk in composites has also been proven to reduce greenhouse gases.



Rice Husks



WPC Compound

Polymer

## Why PVC?

Our repurposed PVC is more resistant to high pressures, bending and compression, and has flame retardant properties as compared to PP and HDPE. It is obtained sustainably and made to last.

# The Pool



WPC Outdoor Decking  
Color: Rosewood



WPC Outdoor Decking  
Color: Burmese Teak



WPC Outdoor Decking  
Color: Rosewood



WPC Outdoor Decking  
Color: Rosewood





WPC Outdoor Decking  
Color: Burmese Teak

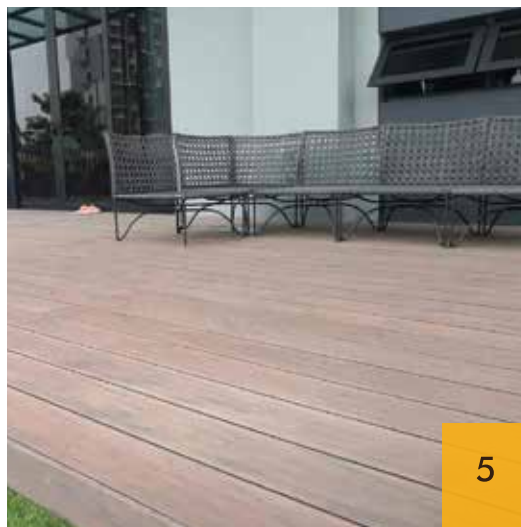


WPC Outdoor Decking  
Color: Driftwood



WPC Outdoor Decking  
Color: Burmese Teak

WPC Outdoor Decking  
Color: Rosewood



# The Deck

# The Exterior



WPC Wall Cladding  
Color: Rosewood



WPC Louvre  
Color: Burmese Teak



WPC Outdoor Decking & Cladding  
Color: Burmese Teak



WPC Outdoor Decking  
Color: Driftwood



WPC Outdoor Decking  
Color: Rosewood



WPC Outdoor Cladding  
Color: Burmese Teak



WPC Outdoor Decking  
Color: Rosewood

# The Creative

# Find Your Shades of Brown

Inspired by colors found in nature, our products come with a natural variation of colour tones, each having its own beautiful characteristics, wood grains, patterns, texture and finishes to complement any living space. Every single piece is unique.

Burmese Teak

White Coffee

Rosewood

Driftwood

Rustic Brown

Cool Grey



Flat



Grooved



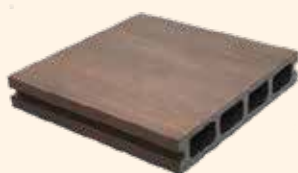
Embossed



# WPC Decking

## Hollow Series

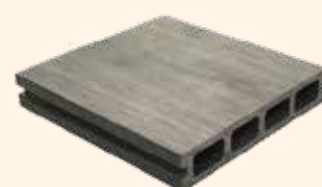
### Flat Surface



Model : DK14025  
Color: Rosewood  
140mm(W) x 25mm(H)



Model : DK14025  
Color: Burmese Teak  
140mm(W) x 25mm(H)



Model : DK14025  
Color: Driftwood  
140mm(W) x 25mm(H)



Model : DK14025  
Color: Rustic Brown  
140mm(W) x 25mm(H)



Model : DK14025  
Color: White Coffee  
140mm(W) x 25mm(H)



Model : DK14025  
Color: Cool Grey  
140mm(W) x 25mm(H)

# WPC Decking

## Hollow Series

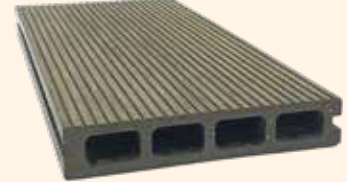
### Grooved Surface



Model : DK14025  
Color: Rosewood  
140mm(W) x 25mm(H)



Model : DK14025  
Color: Burmese Teak  
140mm(W) x 25mm(H)



Model : DK14025  
Color: Driftwood  
140mm(W) x 25mm(H)



Model : DK14025  
Color: Rustic Brown  
140mm(W) x 25mm(H)



Model : DK14025  
Color: White Coffee  
140mm(W) x 25mm(H)



Model : DK14025  
Color: Cool Grey  
140mm(W) x 25mm(H)

# WPC Decking

## Hollow Series

### Embossed Surface



Model : DK14025(E)  
Color: Rosewood  
140mm(W) x 25mm(H)



Model : DK14025(E)  
Color: Burmese Teak  
140mm(W) x 25mm(H)



Model : DK14025(E)  
Color: Driftwood  
140mm(W) x 25mm(H)



Model : DK14025(E)  
Color: Rustic Brown  
140mm(W) x 25mm(H)



Model : DK14025(E)  
Color: White Coffee  
140mm(W) x 25mm(H)



Model : DK14025(E)  
Color: Cool Grey  
140mm(W) x 25mm(H)

# WPC Decking

## Solid Series



Model : DK14025(S)  
Color : Rosewood  
140mm(W) x 25mm(H)



Model : DK14025(S)  
Color : Burmese Teak  
140mm(W) x 25mm(H)



Model : DK14025(S)  
Color : Driftwood  
140mm(W) x 25mm(H)

\*Additional color options are also available.



# WPC Decking

## Hollow Series (Round Core)



Model : DK14025(R)  
Color : Rosewood  
140mm(W) x 25mm(H)



Model : DK14025(R)  
Color : Burmese Teak  
140mm(W) x 25mm(H)



Model : DK14025(R)  
Color : Driftwood  
140mm(W) x 25mm(H)

\*Additional color options are also available.

# WPC Cladding

## Double Layer Cladding

### Flat Surface



Model : CO17313  
Color: Rosewood  
173mm(W) x 13mm(H)



Model : CO17313  
Color: Burmese Teak  
173mm(W) x 13mm(H)



Model : CO17313  
Color: Driftwood  
173mm(W) x 13mm(H)

### Embossed Surface



Model : CO17313(E)  
Color: Rosewood  
173mm(W) x 13mm(H)



Model : CO17313(E)  
Color: Burmese Teak  
173mm(W) x 13mm(H)



Model : CO17313(E)  
Color: Driftwood  
173mm(W) x 13mm(H)

# WPC Cladding

## Double Layer Cladding

### Flat Surface



Model : CO12813  
Color: Rosewood  
128mm(W) x 13mm(H)



Model : CO12813  
Color: Burmese Teak  
128mm(W) x 13mm(H)



Model : CO12813  
Color: Driftwood  
128mm(W) x 13mm(H)

### Embossed Surface



Model : CO12813 (E)  
Color: Rosewood  
128mm(W) x 13mm(H)



Model : CO12813 (E)  
Color: Burmese Teak  
128mm(W) x 13mm(H)



Model : CO12813 (E)  
Color: Driftwood  
128mm(W) x 13mm(H)

# WPC Louvre

## Louvre



Model : LO9020  
Color : Rosewood  
90mm(W) x 20mm(H)



Model : LO9020  
Color : Burmese Teak  
90mm(W) x 20mm(H)



Model : LO9020  
Color : Driftwood  
90mm(W) x 20mm(H)

## Louvre (Slant)



Model : LO9020(S)  
Color : Rosewood  
90mm(W) x 20mm(H)



Model : LO9020(S)  
Color : Burmese Teak  
90mm(W) x 20mm(H)



Model : LO9020(S)  
Color : Driftwood  
90mm(W) x 20mm(H)

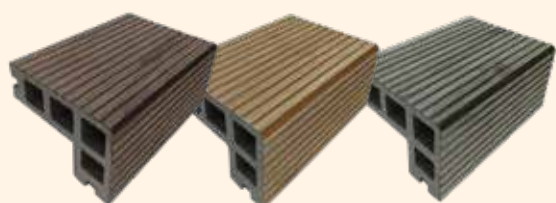
Accessories:



Louvre Cap (Set of 2 pcs)  
Model : LC9525  
Color : ● ● ●

# Accessories

## WPC Edge Trim



### Groove Surface

Model : ET7550

75mm(W) x 50mm(H)

Color:



### Flat Surface

Model : ET7550

75mm(W) x 50mm(H)

Color:



### Fastener

Model : T10/13

Color : ● ●



### Batten

Model : B4025



### Metal Start/End Clip

Model : M10/M13



### Stainless Steel Screw

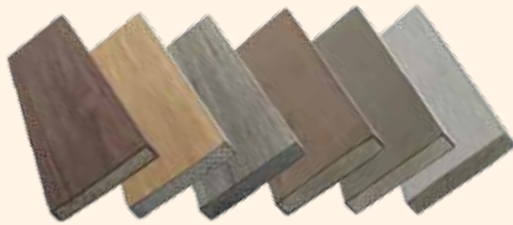
Model : 6x25

Self-Drilling/Self-Tapping

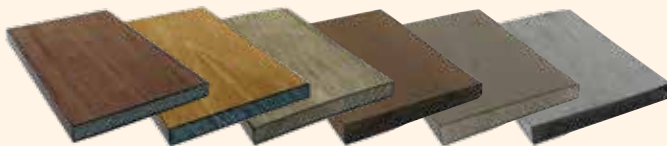
Color : ● ●

# Accessories

## WPC End Cap



Model : E508  
50mm(W) x 8mm(H)  
Color :



Model : E9010  
90mm(W) x 10mm(H)  
Color :



# Accessories

## WPC L-angle (Sanding Surface)



Model : L5555  
55mm(W) x 55mm(H)  
Color :



## PVC Lining (Sanding Surface)



Model : L0328  
28mm(W) x 28mm(T)  
Color :



Model : L2828  
28mm(W) x 28mm(T)  
Color :



\*For non-direct sunlight, interior/semi-open space application.



BUATAN MALAYSIA  
MADE IN MALAYSIA

Made For Within

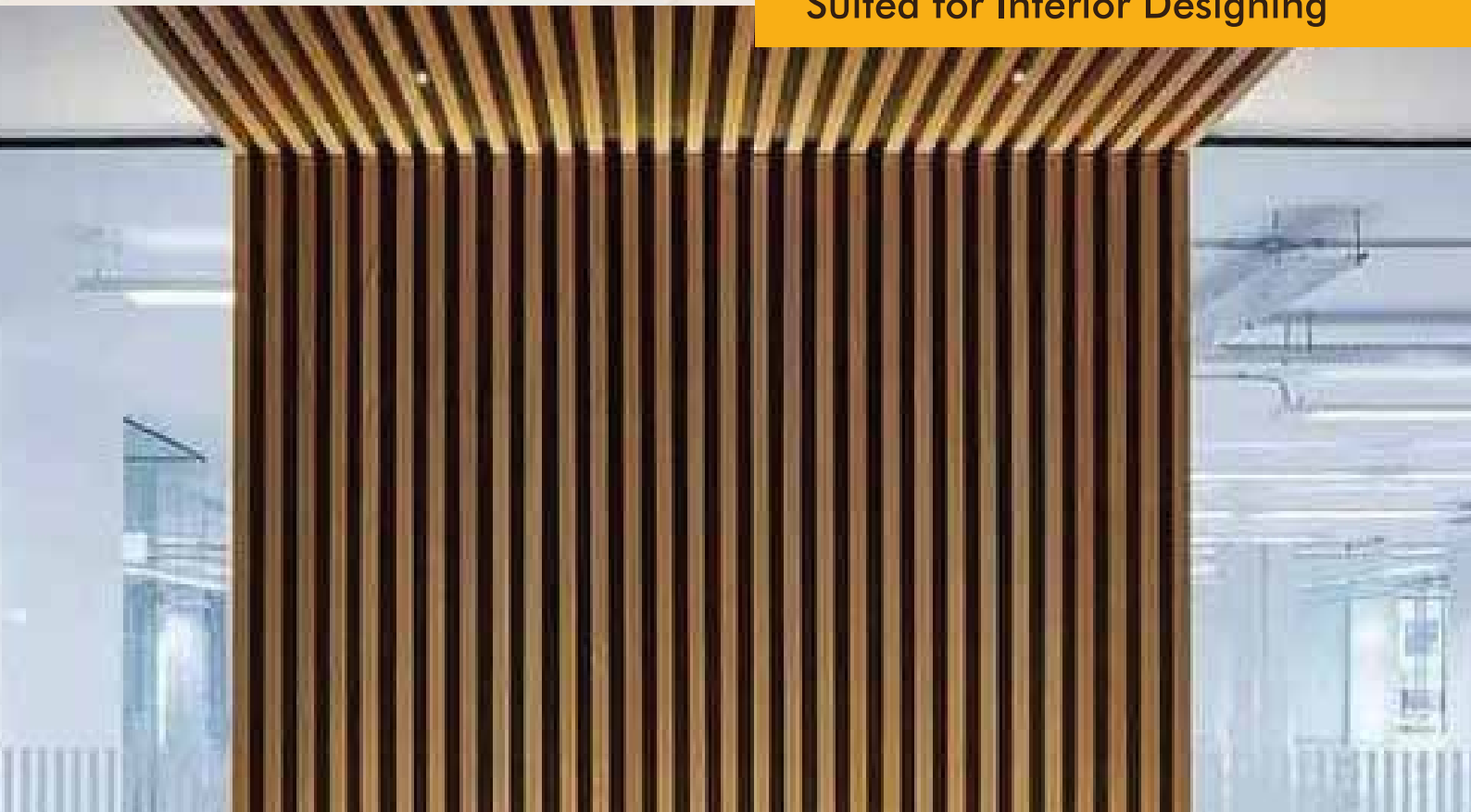
# Lightweight Foamed Vinyl Composite

PVC Wall Panel

PVC Ceiling Panel

PVC Ceiling Deck

Suited for Interior Designing





## What You Will See

Made with foamed vinyl, install these beautiful indoor wood replacement boards on any flat surfaces such as wall, ceilings, cabinets and so on.



### Maintenance Guide:

- 15-year manufacturer's limited warranty.
- No painting or coating is required.

### Lightweight Foamed Vinyl Composite

- Homogenous wood grain (non-laminated or printed)
- Lightweight (reduce weight load on roof trusses & easy to transport, handle & install)
- Fire retardant
- Waterproof
- Mildew resistant
- Termite-proof
- Noise dampener
- Heat insulation



## Why Homogenous Foamed PVC?

Homogeneous finishing materials allow for a natural wood grain effect, and are solvent resistant as compared to laminated or printed surfaces. It is made to last.

# The Bathroom



PVC Ceiling Panel



PVC Ceiling Deck



PVC Ceiling Panel



PVC Wall Panel

# The Hall



PVC Ceiling Deck



PVC Ceiling Panel



PVC Wall & Ceiling Panel



PVC Ceiling Panel



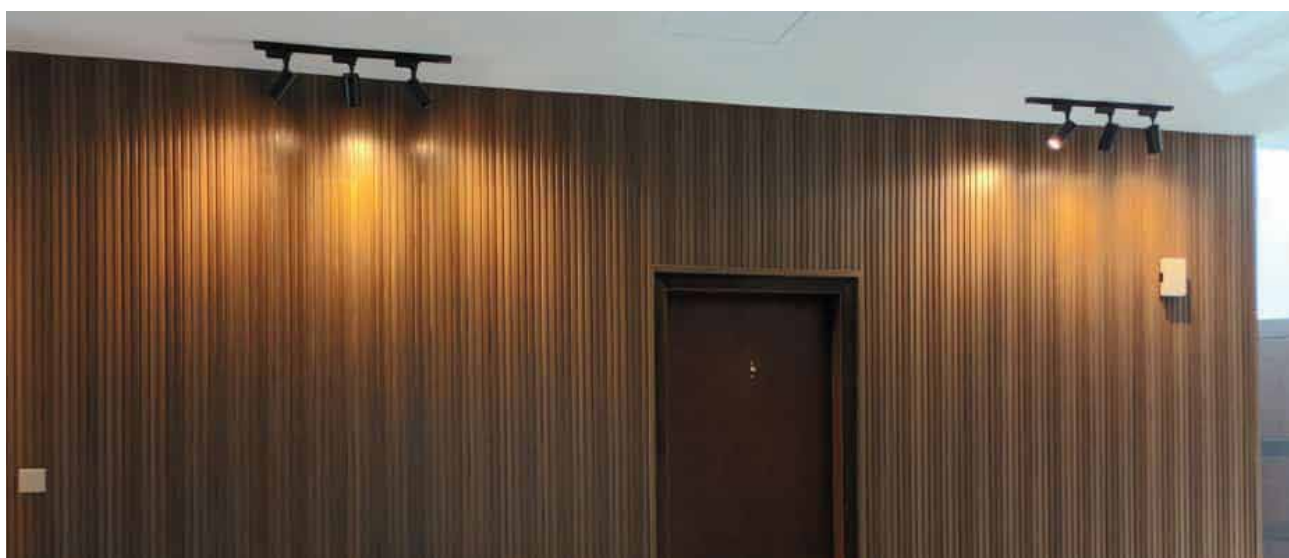
PVC Ceiling Panel



PVC Wall Panel



PVC Wall Panel



PVC Wall Panel

# The Ceiling



PVC Ceiling Panel



PVC Ceiling Panel



PVC Ceiling Panel



PVC Ceiling Panel

PVC



PVC Wall & Ceiling Panel



PVC Ceiling Deck



PVC Ceiling Panel

# The Rooms

PVC Wall Panel



# Find Your Shades of Brown

Inspired by colors found in nature, our products come with a natural variation of colour tones, each having its own beautiful characteristics, wood grains, patterns, texture and finishes to complement any living space. Every single piece is unique.



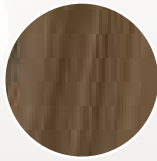
Golden Pine



Golden Teak



Okoume



Nutmeg



Red Teak



Ebony



White



Black



Dark Grey



# PVC Wall Panel



**3-Hole**  
Model : W21520  
215mm(W) x 20mm(T)  
Color :



**4-Hole**  
Model : FP15925  
159mm(W) x 25mm(T)  
Color :



**5-Hole**  
Model : FP1579  
157mm(W) x 9mm(T)  
Color :



**8-Hole**  
Model : FP16915  
169mm(W) x 15mm(T)  
Color :



Accessories:



**Panel Clip**  
Model : C4330  
43mm(W) x 30mm(T)



## PVC Wall Panel

# 3-Hole

Model : W21520

Golden Pine

Golden Teak

Okoume

Nutmeg

Dark Grey

Black



## PVC Wall Panel

# 4-Hole

Model : FP15925

Golden Pine

Golden Teak

Okoume

Nutmeg

Dark Grey

White

Black



# PVC Wall Panel

## 5-Hole

Model : FP1579

Golden Pine

Golden Teak

Okoume

Nutmeg

Dark Grey

White

Black



## PVC Wall Panel

# 8-Hole

Model : FP16915

Golden Pine

Golden Teak

Okoume

Nutmeg

Dark Grey

White

Black



# PVC Ceiling Panel



Hollow  
Model : CI1218  
121mm(W) x 8mm(T)  
Color :



Solid  
Model : CI12012  
120mm(W) x 12mm(T)  
Color :



Solid - Embossed  
Model : CI12012(E)  
121mm(W) x 8mm(T)  
Color :



## PVC Ceiling Panel

# Hollow

Model : CI1218

Golden Pine

Golden Teak

Okoume

Nutmeg

Red Teak

Ebony

Dark Grey



## PVC Ceiling Panel

# Solid

Model : CI12012

- Golden Pine
- Golden Teak
- Okoume
- Nutmeg
- Red Teak
- White
- Ebony



## PVC Ceiling Panel

# Solid (Embossed)

Model : CI12012E

Golden Pine

Golden Teak

Okoume

Nutmeg

Red Teak

White

Ebony





# PVC Ceiling Deck



Model : C4095  
Color : Golden Pine  
40mm(W) x 95mm(H)



Model : C4095  
Color : Golden Teak  
40mm(W) x 95mm(H)



Model : C4095  
Color : Okoume  
40mm(W) x 95mm(H)



Model : C4095  
Color : Nutmeg  
40mm(W) x 95mm(H)

Accessories:



Steel Keel  
Model : C4095

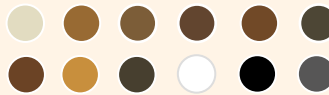


PVC Insert  
Model : P10350

# Accessories



**PVC Lining**  
Model : L0328  
28mm(W) x 3mm(T)  
Color :



**PVC L-angle**  
Model : L2828  
28mm(W) x 28mm(T)  
Color :



**PVC Lining**  
Model : L2848  
28mm(W) x 48mm(T)  
Color :



\*For non-direct sunlight, interior/semi-open space application.

# Environmental Philosophy

Our green building products align with Environmental, Social and Governance (ESG) principles which contributes to a more sustainable and socially responsible built environment.



Sustainable



Material  
100% Recyclable



Low Embodied  
Carbon Material





## A Perfect Blend of WPC Technology and Art



Homogenous  
Composition



15-Year  
Limited Warranty



Weather  
Resistant



Made in  
Malaysia



Sustainable



Low Embodied  
Carbon Material

### **Timberdeck Sdn. Bhd. (945282-V)**

The leading regional manufacturer in research & development for Wood Plastic Composite (WPC) and Vinyl Composite (PVC) products.

PT 9119 & 9120, Persiaran Perindustrian Tungzen 31, Kawasan Perindustrian Tungzen,  
Kampung Kepayang, 31300 Daerah Kinta, Perak.

Office No: 012-6511628 (line 1) | 012-6391953 (line 2)

Email: [info@boisdeck.com](mailto:info@boisdeck.com) | [mkt@timberdeck.com.my](mailto:mkt@timberdeck.com.my)

Website: [www.boisdeck.com](http://www.boisdeck.com)

### **Revowood Sdn. Bhd. (848475-M)**

The marketing arm of Timberdeck Sdn Bhd for the Malaysia market. A One-Stop Service Center cum Showroom.

No. 18, Jalan BP 5/8, Bandar Bukit Puchong, 47100 Puchong, Selangor.

T: +603-5888 7886 / F: +603-5891 6282 / [mkt@revowood.com.my](mailto:mkt@revowood.com.my)

### **SYG (Thailand) Co., Ltd.**

Sole Distributor for Timberdeck Sdn Bhd for the Thailand market.

16/6 Moo 4, T.Bung, A.Sriracha, Chonburi 20230, Thailand.

T: +66 (0) 3837-2451/454 / F: +66 (0) 3837-2454 / [syg-t@syg53.com](mailto:syg-t@syg53.com)

